



hillside  
BEACH CLUB

*heaven  
on earth*





















**hillside**  
BEACH CLUB  
*heaven  
on earth*

*for feeling  
the mediterranean blue  
and the unique nature*

*In its private bay amid pine trees  
you will find crystal blue water,  
the sunny side of life, and a unique  
combination of warmth,  
enthusiasm and hospitality.*



*"today I woke up in heaven"*

*robin b.*







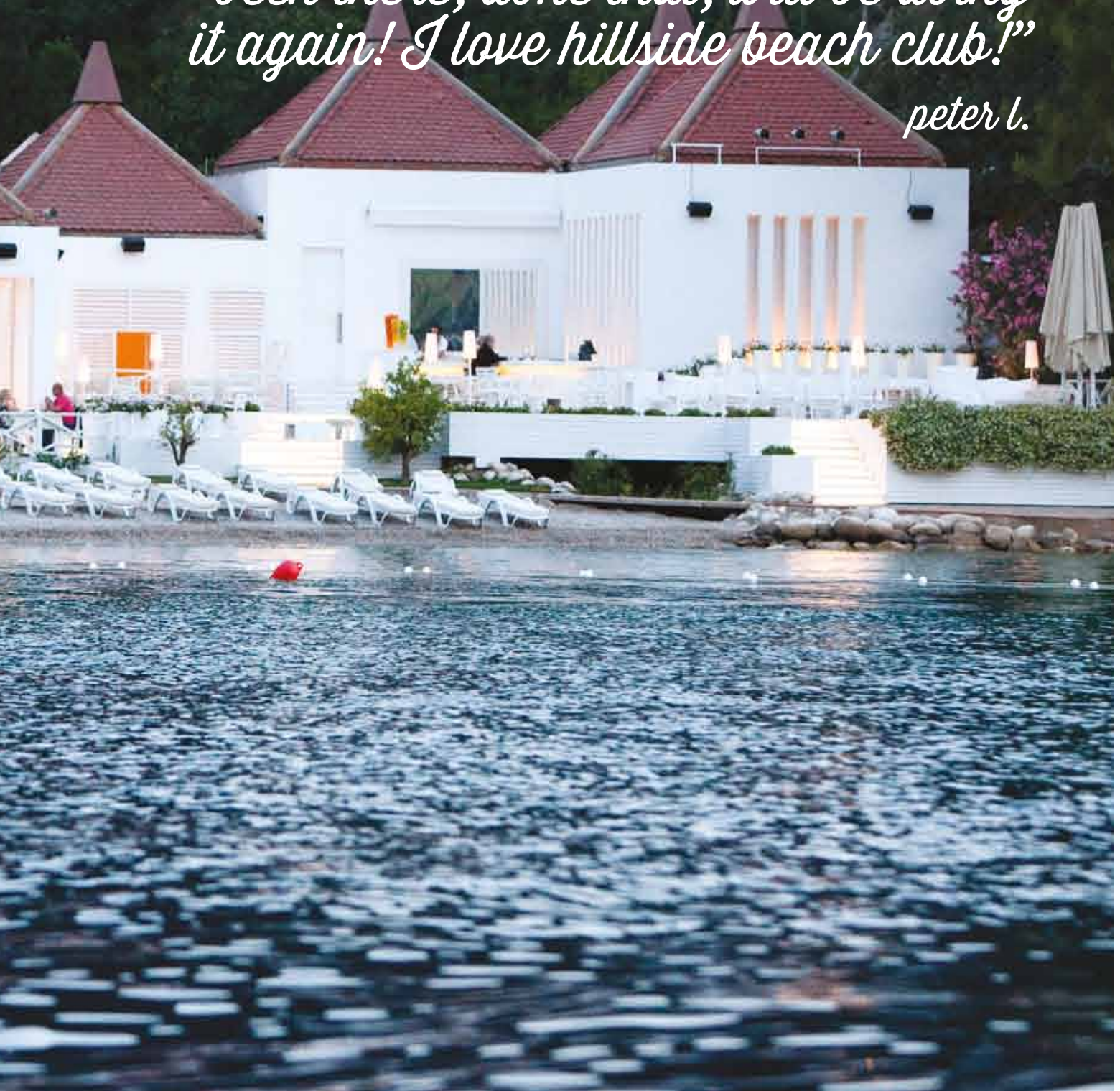




*breakfast at pasha*

*“been there, done that, will be doing  
it again! I love hillside beach club!”*

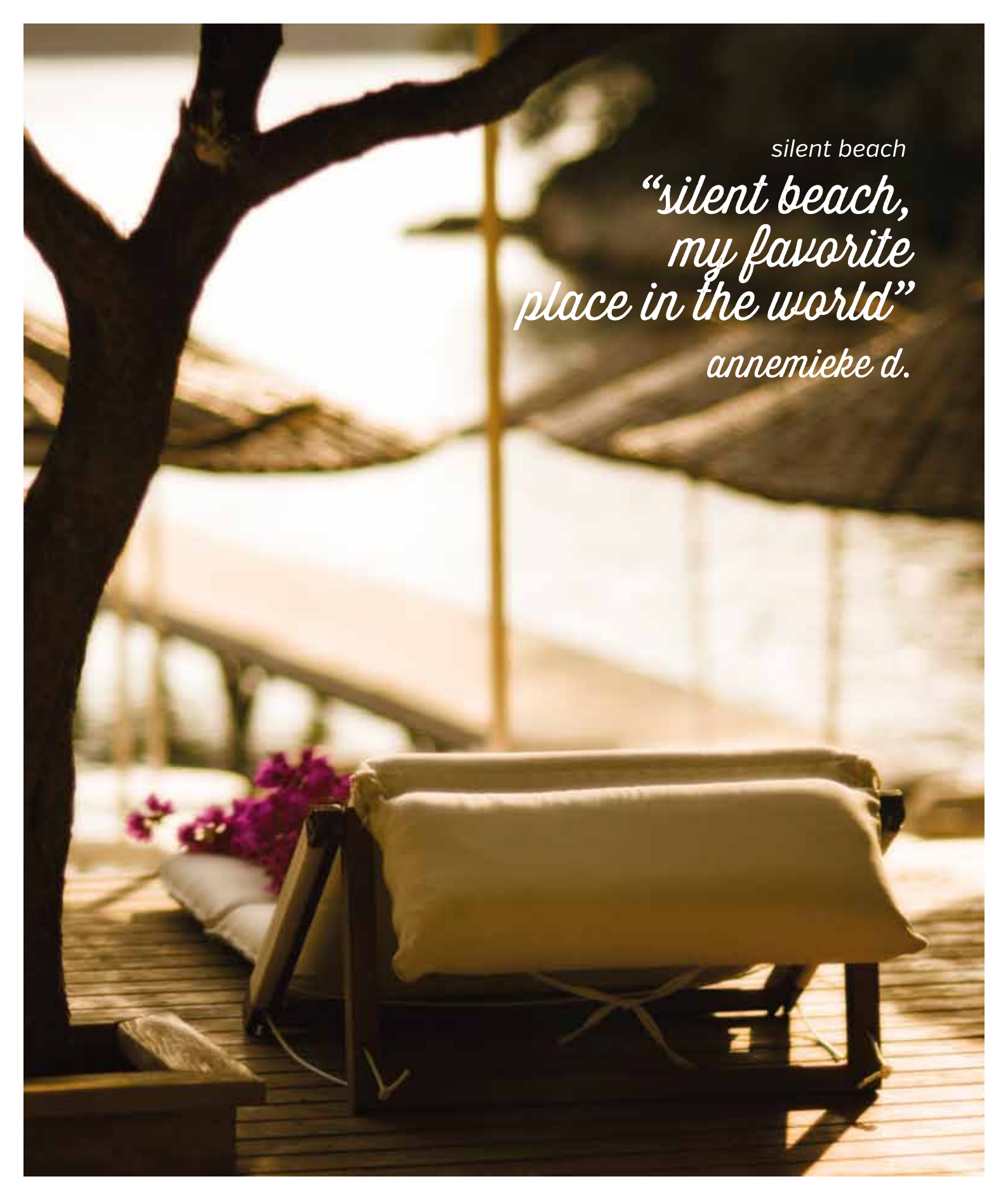
*peter l.*





*serenity beach*



A photograph of a serene beach scene. In the foreground, a wooden deck is visible. A dark tree trunk is on the left. In the center, a lounge chair with a white cushion and a dark frame sits on the deck. To the left of the chair, there are some purple flowers. In the background, a thatched umbrella is visible, and the ocean and sky are blurred. The lighting is warm and golden, suggesting a sunset or sunrise.

silent beach

*“silent beach,  
my favorite  
place in the world”*

*annemieke d.*









beach

*“the only  
place  
I dream  
of being  
every year”*

*özge s.*





watersports

*“today I had the great pleasure of  
watching a world champion”*

*jane a.*

















Find Serenity Beach on foot via a fabulous 650-meter nature boardwalk,  
or cruise there with a brief boat trip.

	10:00	10:30	11:00	11:30	12:30	13:30	14:00	14:30	15:00	15:30	16:00	16:30	17:30	18:00	18:30	19:00	19:30
<b>departure</b>																	
<b>return</b>	10:15	10:45	11:15	11:45	12:45	13:45	14:15	14:45	15:15	15:45	16:15	16:45	17:15	17:45	18:15	19:15	19:45


**serenity  
boat** 

*please call 1000 for anything you might need*







A photograph of a peaceful beach setting. In the foreground on the left, a tall, black, woven hanging lantern is suspended. In the center, a white hammock with a wooden bar is strung between trees. The ground is covered in light-colored pebbles. The background is filled with lush green trees and foliage, with sunlight filtering through the leaves. In the top right corner, there is a dark, rounded object, possibly a hanging lamp or a piece of furniture.

serenity beach

*“probably the most perfect  
place in the world”*

*florina a.*





A scenic view of a rocky coastline. In the foreground, a blue lounge chair is partially visible on a sandy beach. The water is clear and greenish-blue, with a white buoy line stretching across it. A large, gnarled tree leans over the water from the rocky shore. In the background, more trees and a hazy mountain range are visible under a clear sky.

*“I truly love this place,  
I can feel the rest deep in my bones”*

*kevin t.*



*kids side*







*“turkey is perfect for a trip  
with children, but hillside beach club  
exceeded my expectations,  
I could ever imagine such a beauty!”*

*jane e.*



beach

*“picture perfect in everywhere”*

*anjuni s.*











main restaurant

*“yes it's the best food ever”*

*brian c.*



A glass of Hillside Sunset cocktail is shown on a wooden deck. The glass is filled with a clear liquid, ice, fresh green apple slices, lime, and blackberries. A white straw with the text "feeling good" is inserted into the drink. The background is a blurred blue pool and wooden deck.

## Hillside Sunset

*vodka: 8 cl*

*currant juice: 10 cl*

*fresh green apple: 1/2 slices*

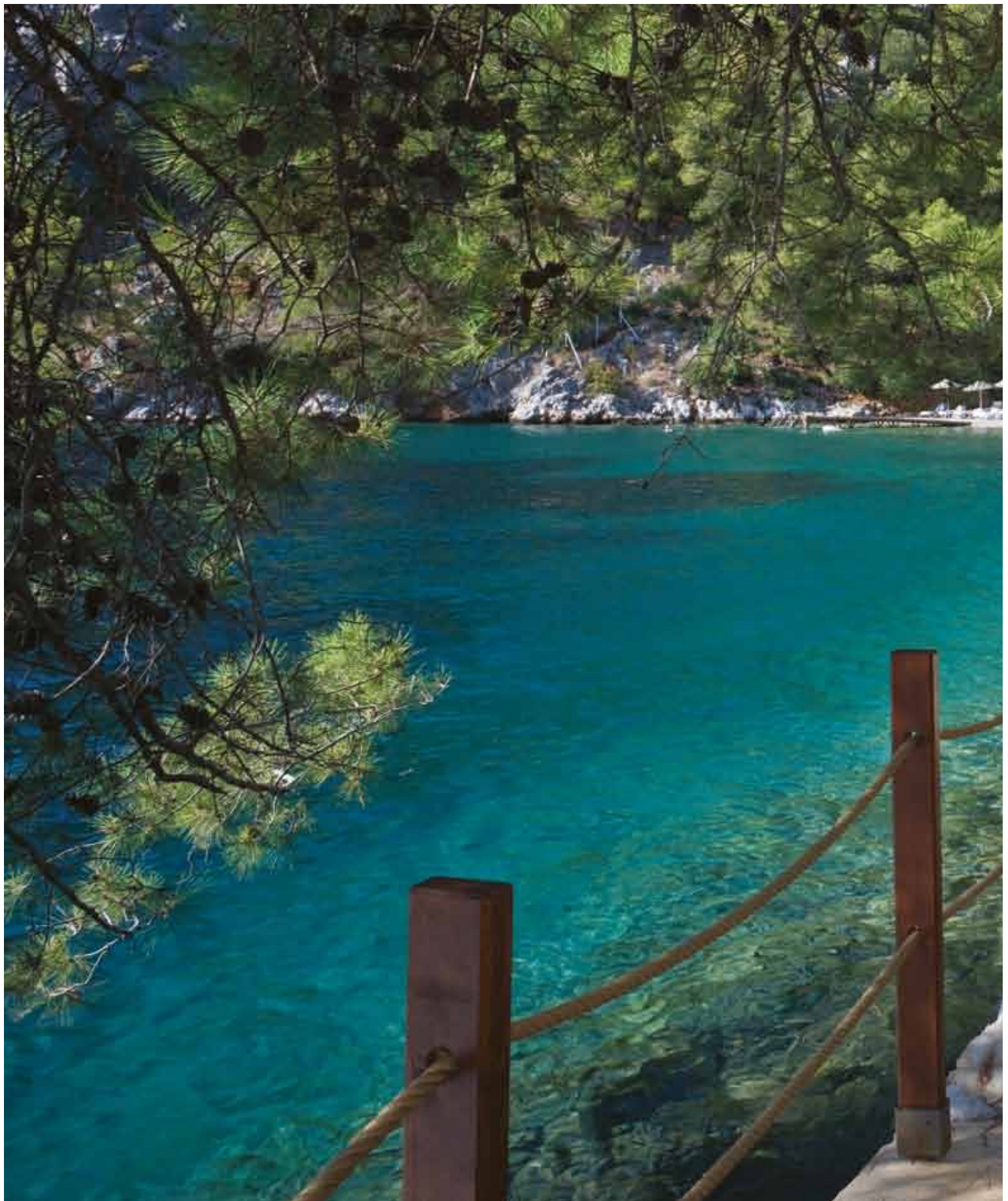
*fresh lime: 1 piece*

*mineral water: 4 cl*

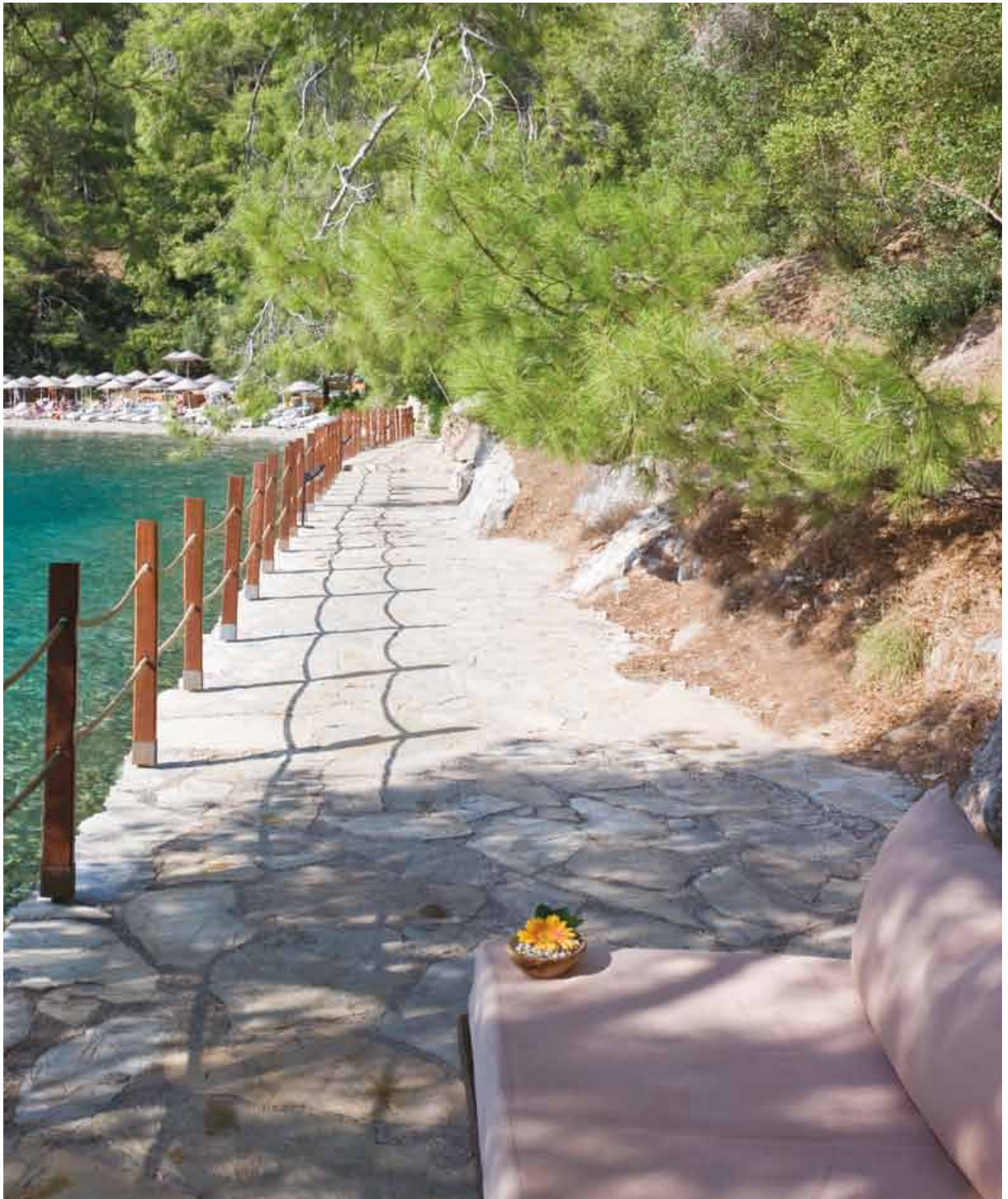
*blackberry: 3 pcs*

*mix absolut vodka and fresh black currant juice on the rocks. add fresh apple slices, lime and fresh blackberries, then top up with sparkling water.*













*remove the label  
to taste the smell of  
sanda spa*



A wooden deck with a thatched roof, outdoor furniture, and a view of a forest. The deck is made of dark wood and has a railing. There is a sofa with cushions, a coffee table with a tray of fruit and candles, and a small table with a bowl of fruit. The background is a lush green forest.

sanda spa

*“can you define happiness?  
said the master. sometimes, yes”*

*hazal y.*









OD

LAVENDER



















hillside beach club

*“kindness is learned from nature here.”*

*ahmet c.*













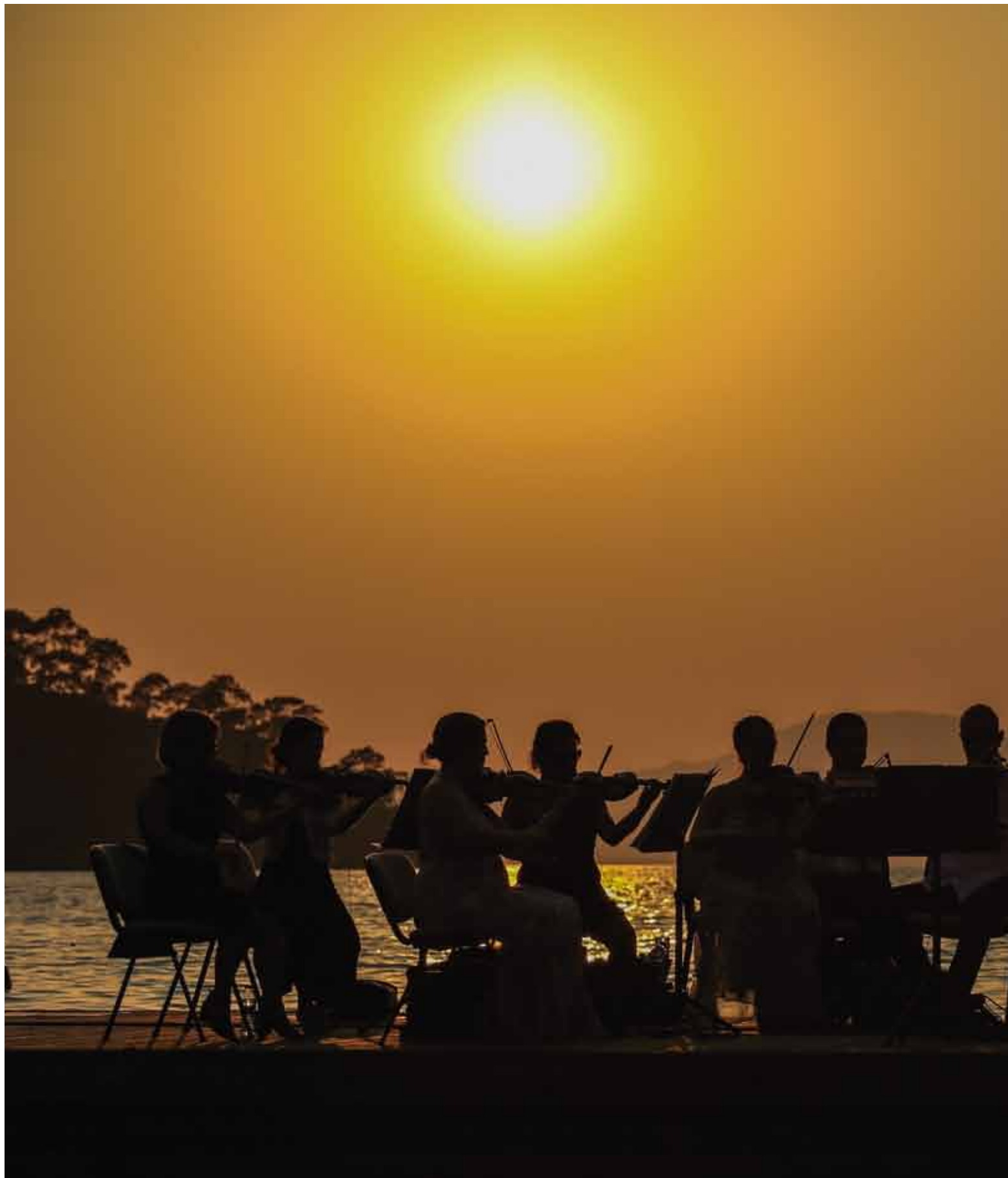


beach bar

*"I always miss this place,  
and long for it every year"*

*nicole b.*







concert on the raft

*“vivaldi at sunset is,  
quite simply, spectacular!”*

*tery y.*

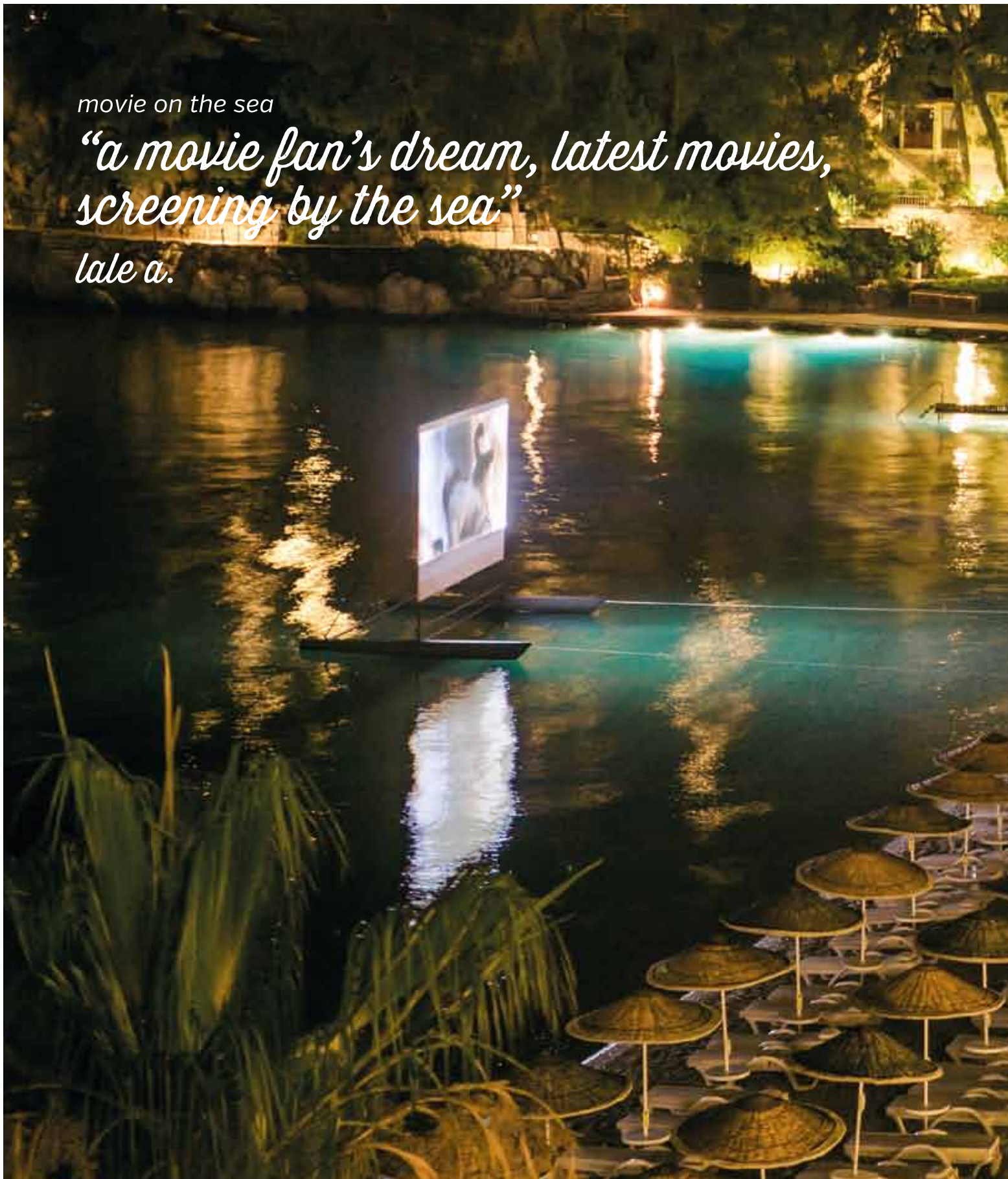




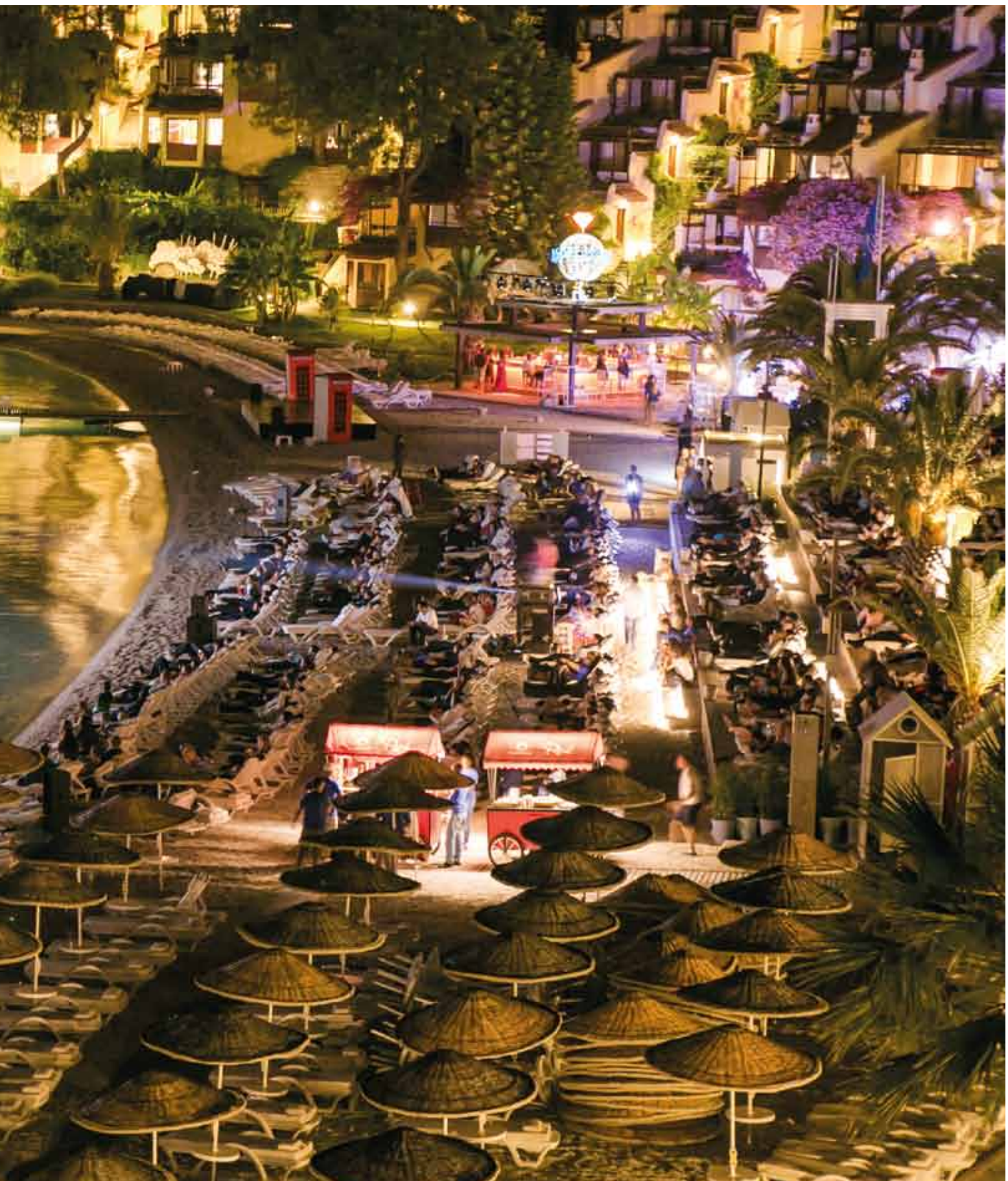
movie on the sea

*“a movie fan’s dream, latest movies,  
screening by the sea”*

*lale a.*



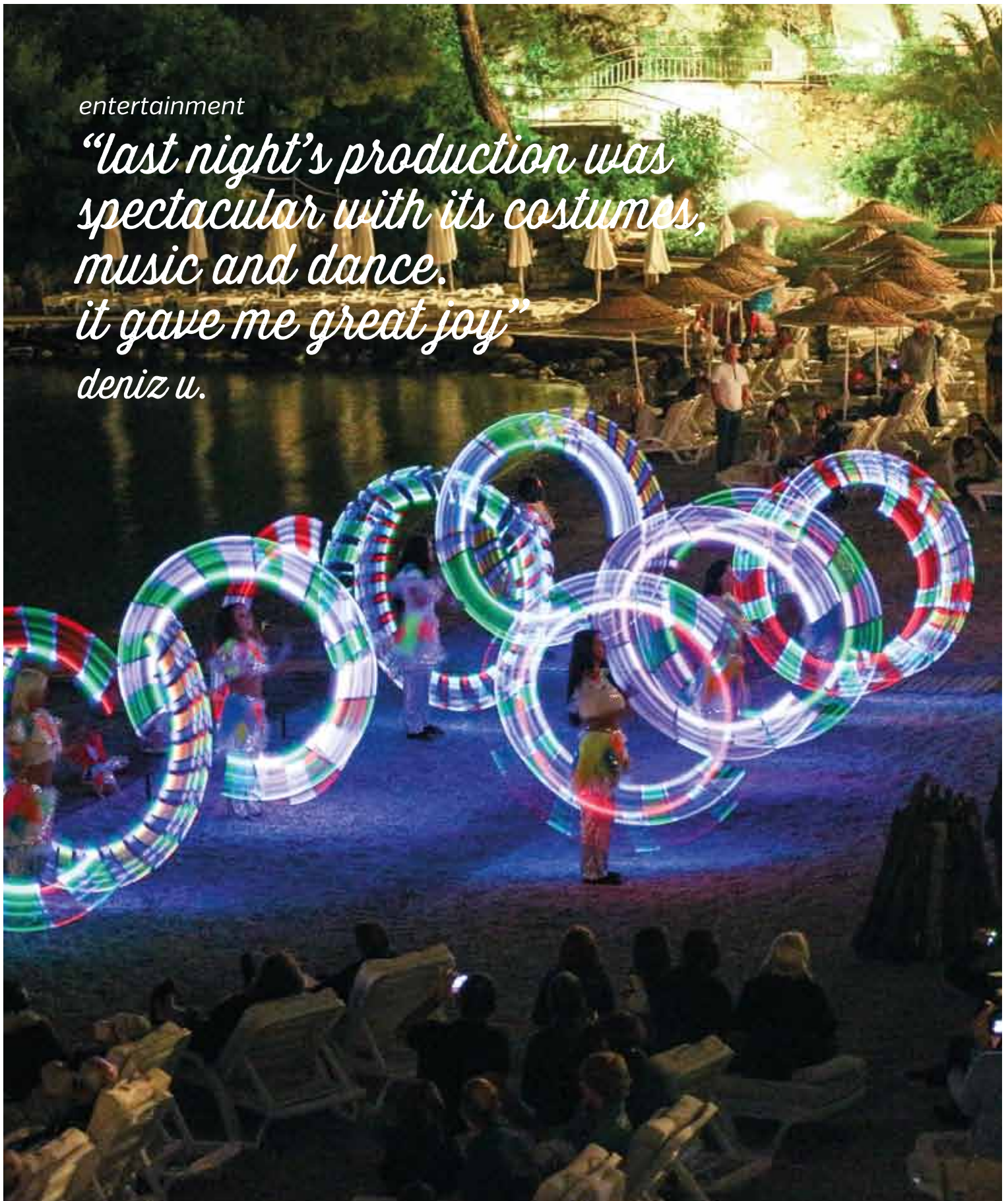






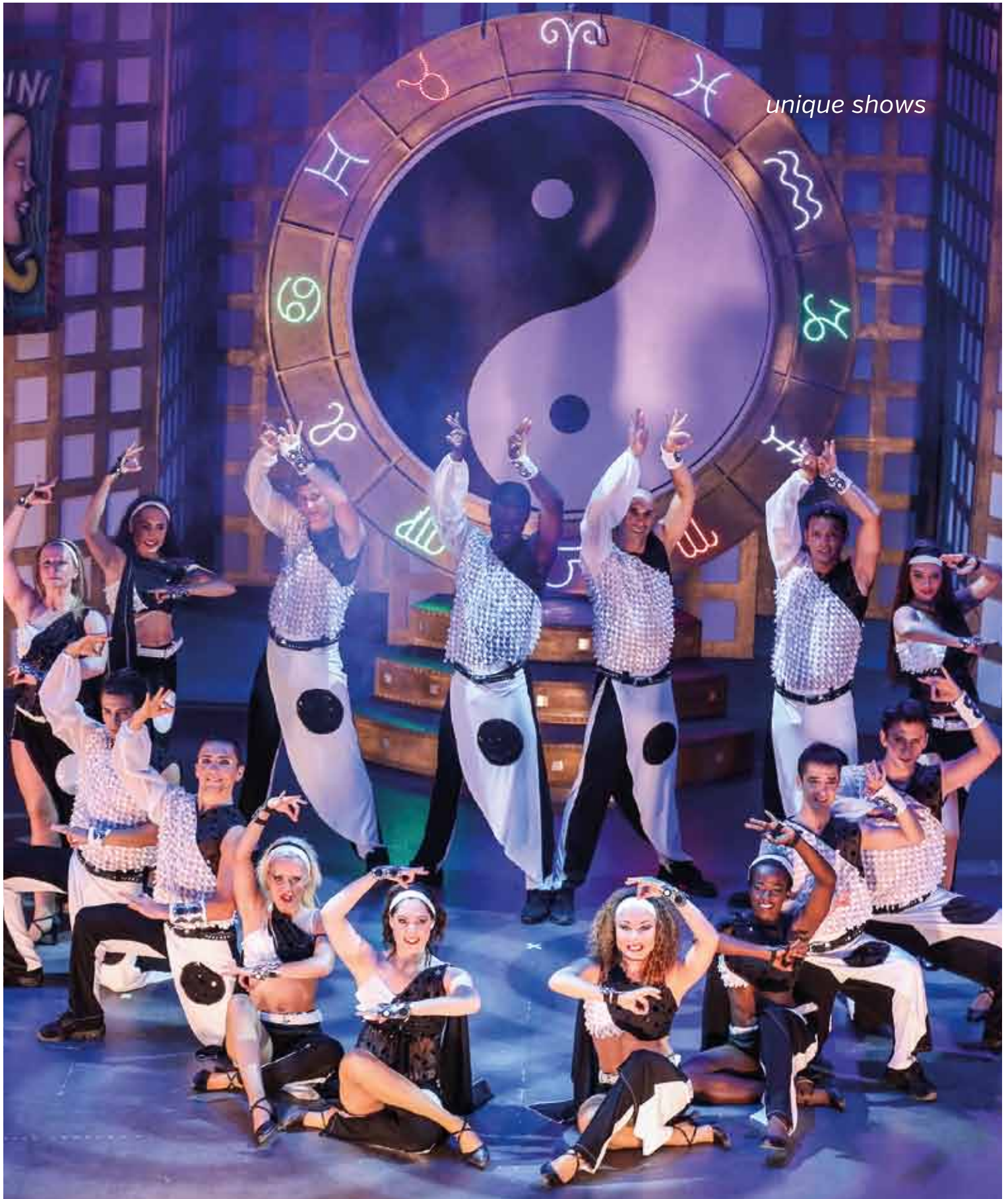
entertainment

*“last night’s production was  
spectacular with its costumes,  
music and dance.  
it gave me great joy”  
deniz u.*





*unique shows*





## **boat trips**

*12 islands / fethiye bay /  
nearby inlets  
sunset tours  
moonlight tours  
fethiye tuesday bazaar  
special boat trip  
blue cruise*

## **culture & nature**

*xanthos  
cadianda - üzümlü  
ephesus  
pınara  
patara  
myra - kekova  
pamukkale  
kaya köyü  
dalyan blue crab  
ölüdeniz  
tlos - saklıkent  
kalkan - kaş  
dalyan - caunos  
caretta caretta*

## **adventure & sport**

*mountain biking  
horse riding  
trekking - lycian way  
kaya köyü / afkule  
fishing tour  
off-road jeep safari*







*hillside outside*

*kayaköy/20 min. to hillside beach club*









 /hillsidebeachclub

 /hillsidebeachclub

*followers*  
follow us on instagram





### **address**

kalemya koyu p.o. box 123  
48300 fethiye/muğla-turkey

### **telephone**

+90 [252] 614 83 60 [pbx]

### **internet address (url)**

hillsidebeachclub.com

### **e-mail**

hbc@hillside.com.tr

### **estate**

100.000 sqm. with pine trees in a private bay

### **category**

5 stars holiday village

### **accommodation**

fullboard + (open buffet breakfast, lunch & dinner in the main restaurant including bottled water, housewine, draught beer and soft drinks.)

### **distance from fethiye**

4 km. [from city center]

### **closest airport**

dalaman [chosen by sunday times as one of the best 6 airports in europe]

### **distance from the airport**

55 km. [approximately 60 min.]

### **capacity**

330 units, 781 beds

### **room types**

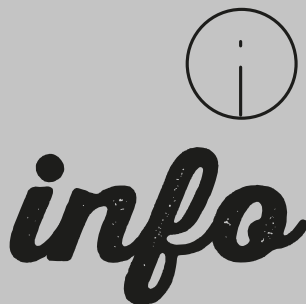
Superior Double Room with Large Terrace [ A Type]

Superior Family Room with Large Terrace [B Type]

Club Room - Double [C Type]

Club Room - Single [D Type]

Double Park View Room [ E Type]





## *beaches*

---

main beach  
serenity beach  
silent beach

## *facilities in rooms*

---

air conditioning  
baby cot (upon request)  
hair dryer  
minibar  
safety deposit box  
ip tv  
wi-fi

## *restaurants*

---

main restaurant  
pasha on the bay  
beach bar restaurant

## *bars*

---

abacco bar  
beach bar  
pasha disco  
pasha bar  
pool bar  
serenity bar  
blue bar

## *shopping facilities*

---

book store  
hillside boutique  
mini market  
photographer  
jewellery  
ice cream corner

## *for children*

---

kids club (4-7 years)  
junior club (8-13 years)  
young club (14-17 years)  
professional animators for children  
children disco  
swimming pool

## *sport facilities*

---

### *complimentary*

basketball  
beach volleyball  
boccia  
canoe  
darts  
fitness center  
mini football  
sailing  
[lessons charged\*]

stretching  
table tennis  
tennis  
[4 courts with  
floodlit  
lesson charged\*]  
water polo  
windsurf  
[lesson charged\*]

### *charged\**

wakeboard  
waterski  
scuba diving  
sailing lessons  
banana  
ringo  
tennis lessons  
mountain biking  
catamaran & trimaran

## *other facilities*

---

amphitheatre  
arts&crafts\*  
car rental\*  
currency exchange  
daily animation activities  
hairdresser  
infirmary  
internet cafe

nature spa\* (balinese massages)  
day spa\* (turkish bath, sauna,  
jacuzzi, massages and facials)  
panoramic elevator  
sunshades, sunbeds, beach towels  
swimming pool  
tv corner  
hillside-outside activities\*  
[jeep safari, boat trips etc.]

\*charged activities

all the information in this brochure is subject to change without prior notice.  
pets are not allowed.



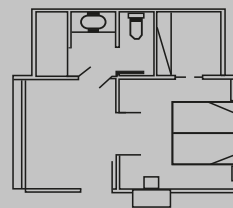
Superior Double Room  
with Large Terrace

**a**  
type

40 m<sup>2</sup> double room with an exclusive sea view terrace. Extra bed is available for the third adult or child.

Accommodation alternatives:

- 2 adults
- 3 adults
- 1 adult + 2 children
- 2 adults + 1 child



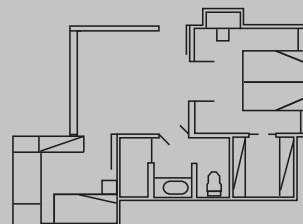
Superior Family Room  
with Large Terrace

**b**  
type

50 m<sup>2</sup> family type double room with an exclusive sea view terrace. Consists of one double and one small room; the rooms are not connected. In the small room, there are two beds with the lengths of 175 cm and 190 cm.

Accommodation alternatives:

- 3 adults
- 4 adults
- 1 adult + 3 children
- 2 adults + 2 children
- 3 adults + 1 child



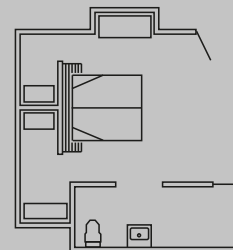
Club Room - Double

**c**  
type

30 m<sup>2</sup> double room with partial sea view. [For single accommodation, 50% supplement is applied].

Accommodation alternatives:

- 1 adult
- 2 adults
- 1 adult + 1 child
- 1 adult + 2 children



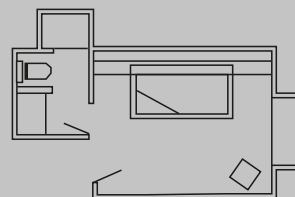
Club Room - Single

**d**  
type

20 m<sup>2</sup> single room.

Accommodation alternatives:

- 1 adult
- 1 adult + 1 child



# room categories

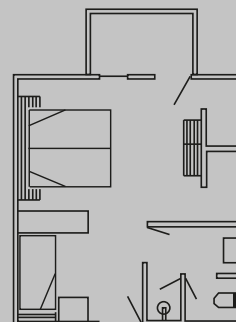
Double Park View Room

**e**  
type

35 m<sup>2</sup> triple, family type room with a balcony and partial sea view.

Accommodation alternatives:

- 2 adults
- 3 adults
- 1 adult + 2 children
- 2 adults + 1 child







## *approximate temperatures (c)*

	april	may	june	july	aug.	sept.	oct.
day time	22°c	26°c	31°c	34°c	34°c	31°c	27°c
night time	13°c	15°c	19°c	21°c	22°c	18°c	14°c
sea water	19°c	22°c	25°c	28°c	29°c	27°c	24°c
sunlight hours	9	10	12	13	12	11	8

*the information above are annual averages*



**hillside**  
BEACH CLUB

*[hillsidebeachclub.com](http://hillsidebeachclub.com)*